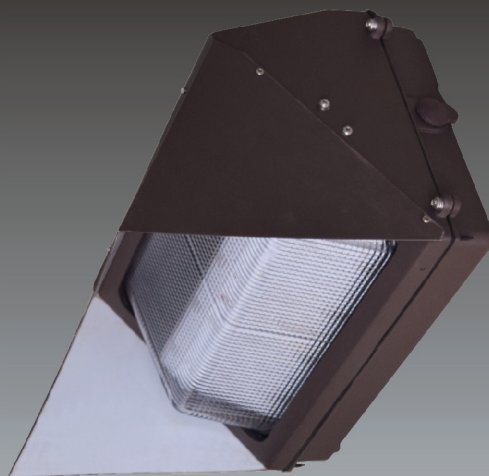


Wall Pack Lighting

YML-1WP01AG Series

Models passed DLC listed:
YML-1WP01AG-40
YML-1WP01AG-60



UL1598

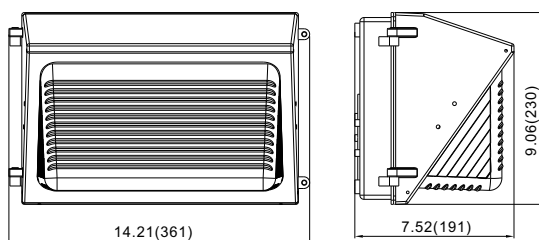


Applications

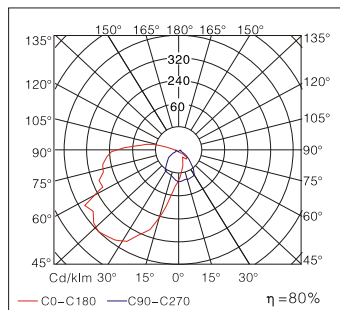
Parks, Shopping Malls, Courtyards, Historic Areas, etc.

- Efficiency of chips: 150-165 lm/w
- Cover: glass, PC cover is also available.
- Beam Angle: asymmetry distribution
- Housing: die casting aluminum housing with excellent heat dissipation, surface treated with powder coated finish for corrosion and static resistance.
- Input voltage: 120-277 VAC, 50/60 HZ
- LED driver: constant current, efficiency is up to 92%, PF ≥ 0.95.
- IP class: IP65

Dimension [Inch(mm)]



Distribution Curve Flux



YML-1WP01AG-40-750

Ordering Information

Example: YML-1WP01AG-40-750-C-A-1

Company code	Voltage	Type	Power	Ra	Colour Temp.	Colour Options	Optic	Options
YML	1 120~277VAC 2 200~240VAC 3 100~120VAC 4 277~480VAC 5 347~480VAC	WP 01AG	40 (40W 3750Lumens) 60 (60W 5600Lumens)	7 70 8 80 9 90	27 2700K 30 3000K 40 4000K 50 5000K 57 5700K 65 6500K	C Coffee (standard) B Black S Silver	A asymmetry distribution	1 0~10V dimming 5 Wireless