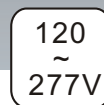
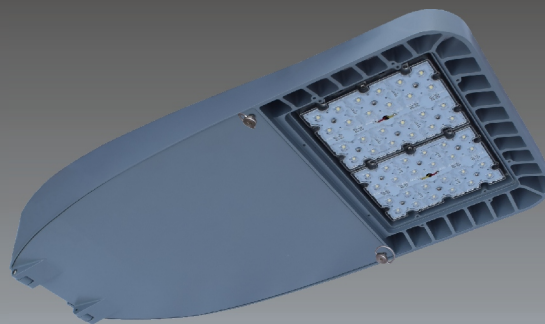


Street Lighting

YML-1SL41L Series

Models passed DLC listed:
YML-1SL41L-100, YML-1SL41L-120,
YML-1SL41L-150, YML-1SL41L-200

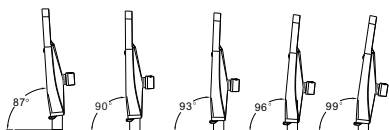
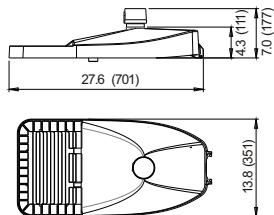


Applications

Roadways, Freeways, Highways, Parking Lots, Off-streets Areas, etc.

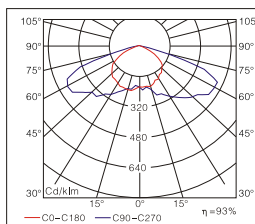
- Efficiency of chips: 150-165 lm/w, 180-195 lm/w
- LENS: Optical grade PC, anti-UV oxidation.
- Beam Angle: Type I, Type II, Type III, Type IV
- Housing: die casting aluminum housing with excellent heat dissipation, surface treated with powder coated finish for corrosion and static resistance.
- Input voltage: 120-277 VAC, 277~480VAC, 50/60 HZ
- LED module can be dismantled separately for maintenance.
- LED driver: constant current, efficiency is up to 92%, PF ≥ 0.95.
- IP class: IP65

Dimension [Inch(mm)]

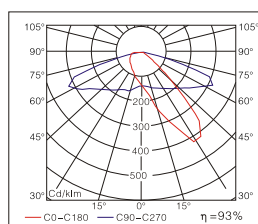


Adjustable Angles

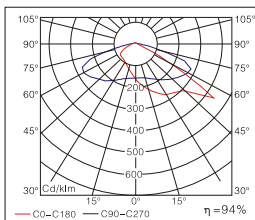
Distribution Curve Flux



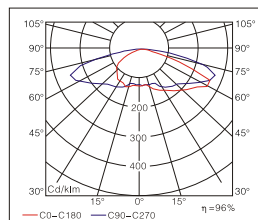
Type I



Type II



Type III



Type IV

Ordering Information

Example: YML-1SL41L-100-750-S-2-1

Company code	Voltage	Type	Power	Ra	Colour Temp.	Colour Options	Optic	Options	
YML	120~277VAC	SL 41L	100 (100W 11700Lumens)	7	27	S Silver(standard) B Black C Coffee	1 Type I 2 Type II 3 Type III 4 Type IV	1 0~10V dimming 2 Timing dimming 3 Occupancy sensor (dimming control/ on off control) 4 Photocell 5 Wireless	
			100P(100W 15100Lumens)	70	2700K				
			120 (120W 15000Lumens)	8	30				
			120P(120W 18300Lumens)	80	3000K				
			150 (150W 18000Lumens)	9	40				
	200~240VAC		150P(150W 21900Lumens)	90	4000K				
			200 (200W 22000 Lumens)		50				5000K
			200P(200W 28200 Lumens)		57				5700K
			277~480VAC		65				6500K
			347~480VAC		6500K				