

Shoe Box Lighting

YML-1SB02 Series

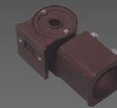
Efficiency of chips: 150-165 lm/w, 180-195 lm/w

- LENS: Optical grade PC, anti-UV oxidation.
- Beam Angle: Type II, Type III, Type IV, Type V

- Models passed DLC listed:
YML-1SB02-80
YML-1SB02-100



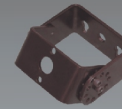
Mounting Mode Options



Slip Fitter



E7 Straight Arm



U-Bracket



Straight Arm + Fixing Seat



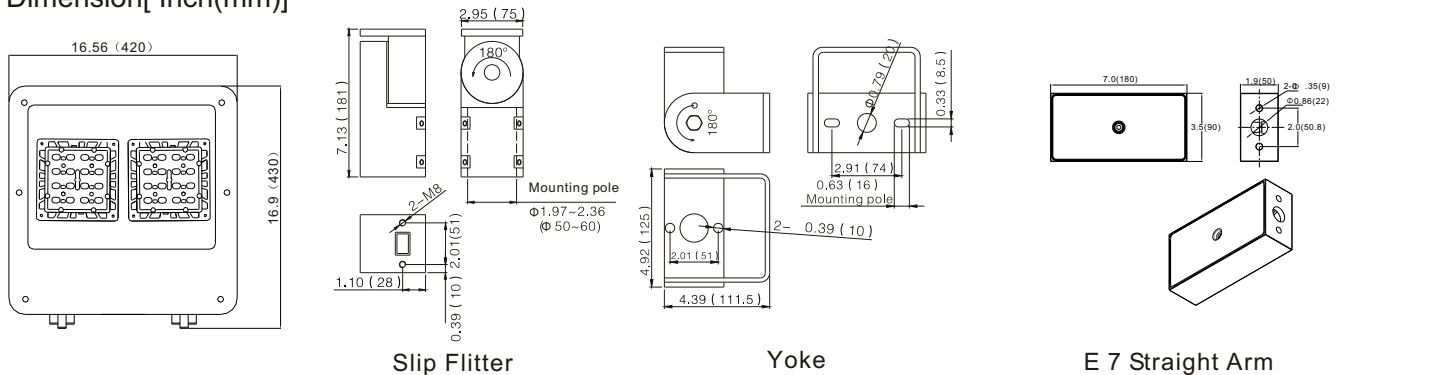
UL1598



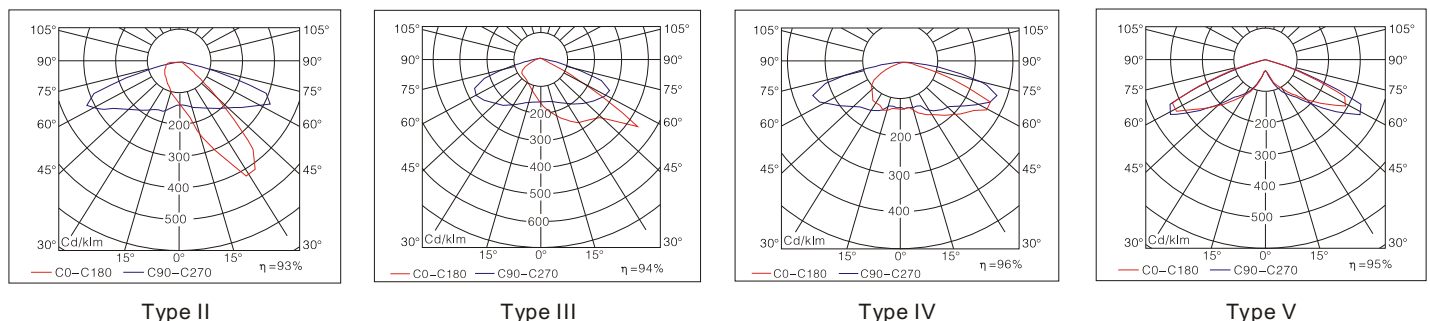
Applications

Parking Lots, Pedestian Walkways and other Outdoor Applications.

Dimension [Inch(mm)]



Distribution Curve Flux



Ordering Information

Example: YML-1SB02-80-750-C-E7-3-1

Company code	Voltage	Type	Power	Ra	Colour Temp.	Colour Options	Mounting	Optic	Options
YML	1 120~277VAC	SB 02	80 (80W 9500Lumens) 80P (80W 12500Lumens) 100 (100W 11500Lumens) 100P (100W 15100Lumens)	7	27	C Coffee(standard)	S Slip fitter	2	1 0~10V dimming
2	200~240VAC			70	2700K	B Black	Y U bracket	3	
3	100~120VAC			80	3000K	S Silver	E7 Straight arm	4	
4	277~480VAC			90	4000K	E7B Straight arm+ fixing seat	Type IV	5	
5	347~480VAC				5700K 6500K		Type V		