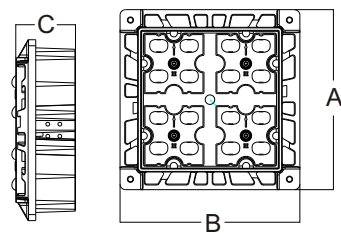
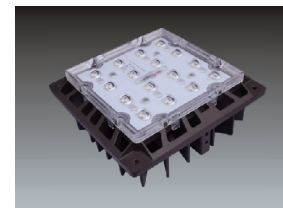
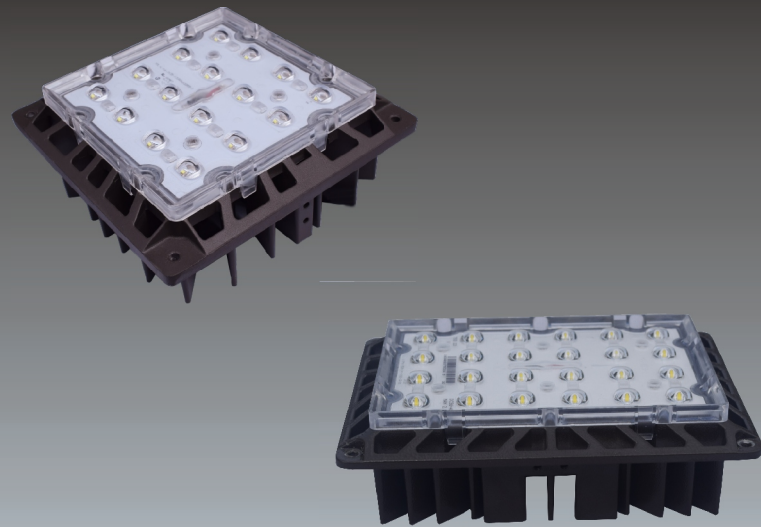
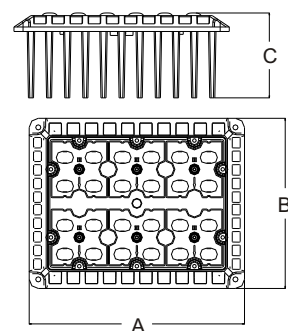


LED Module



- Efficiency of chips: 150-165 lm/w
- Quantity of LED: 16
- CCT: 5000K (Other CCT is available upon request.)
- LENS: Optical grade PC, anti-UV.
- Beam Angle: various lighting distribution is available.
- Housing of module: High pressure die casting aluminum with excellent heat dissipation, surface treated with powder coated finish for corrosion resistance.
- IP class: IP67.
- Matching power supply: 48~55 VDC

Model	Power (W)	Drive Current (mA)	Lumens	CCT(K)	Ra	Efficiency (Lm/W)	Dimension A*B*C [Inch(mm)]
YML-F-150-57-16-3535-750-SA-48	25	465	3250	5000	≥70	130	5.91*5.91*2.24(150*150*57)
YML-F-150-57-16-3535-750-SA-48	30	560	3750	5000	≥70	125	
YML-F-150-57-16-3535-750-SA-48	35	655	4235	5000	≥70	121	
YML-F-150-57-16-3535-750-SA-48	40	750	4720	5000	≥70	118	
YML-F-150-57-16-3535-750-SA-48	45	840	5175	5000	≥70	115	
YML-F-150-57-16-3535-750-SA-48	50	935	5650	5000	≥70	113	

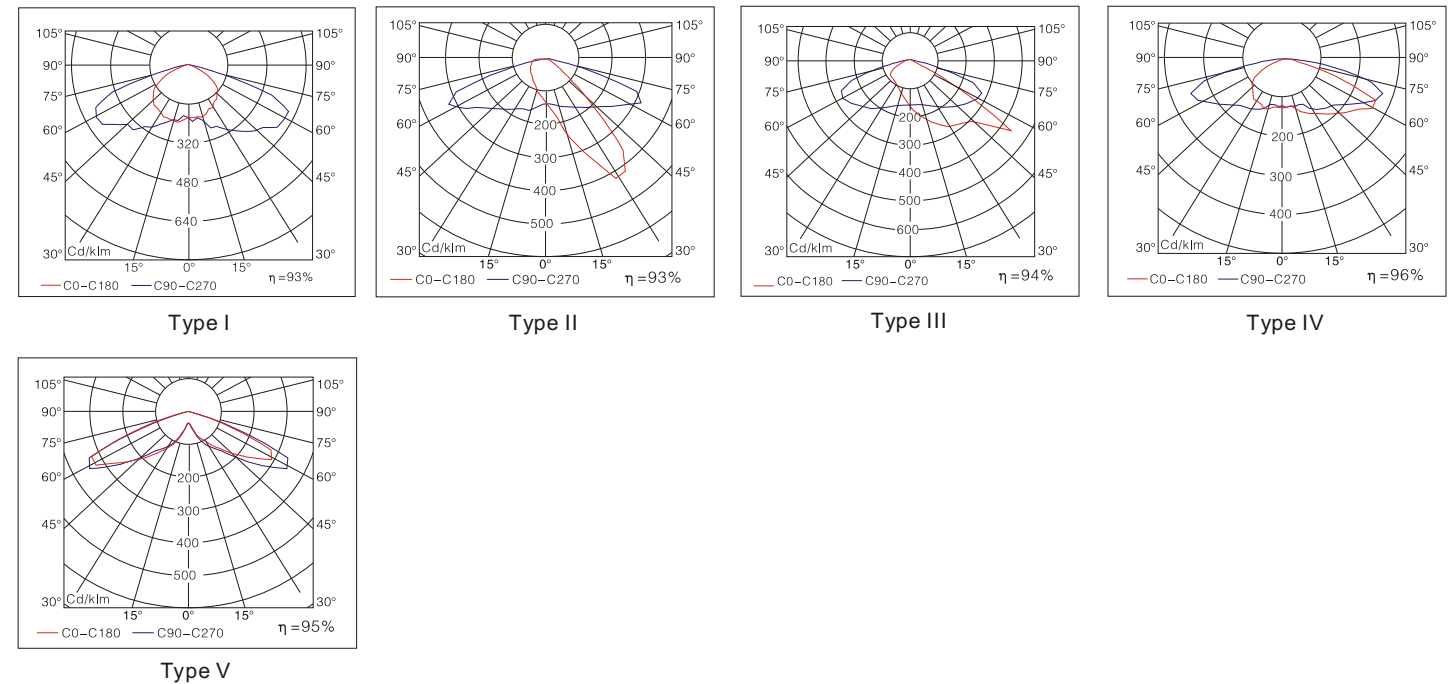


- Efficiency of chips: 150-165 lm/w
- Quantity of LED: 24
- CCT: 5000K (Other CCT is available upon request.)
- LENS: Optical grade PC, anti-UV.
- Beam Angle: various lighting distribution is available.
- Housing of module: High pressure die casting aluminum with excellent heat dissipation, surface treated with powder coated finish for corrosion resistance.
- IP class: IP67.
- Matching power supply: 36~42 VDC

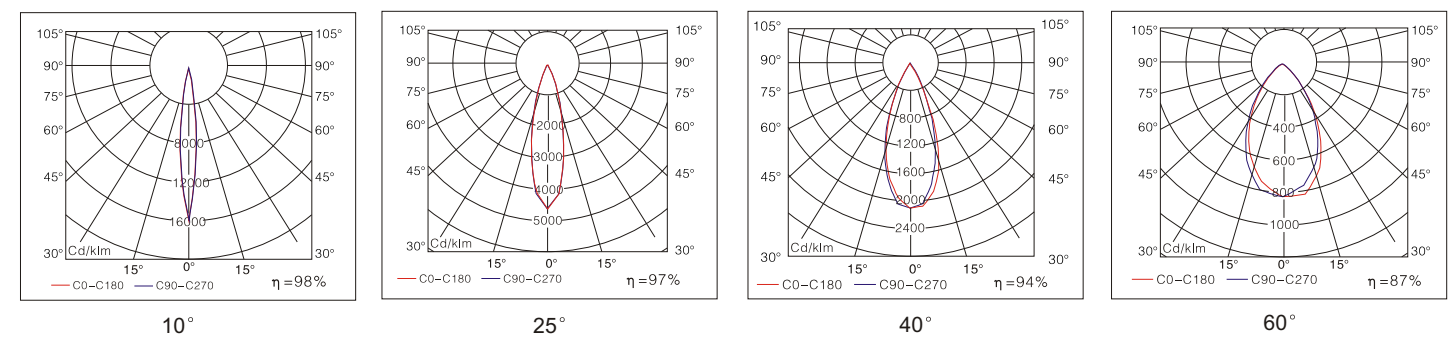
Model	Power (W)	Drive Current (mA)	Lumens (LM)	CCT(K)	Ra	Efficiency (Lm/W)	Dimension A*B*C [Inch(mm)]
YML-C-195-53-4 x 6-3535-750-SA-36	50	625×2	6250	5000	≥70	125	7.68*5.91*2.09(195*150*53)
YML-C-195-53-4 x 6-3535-750-SA-36	55	685×2	6600	5000	≥70	120	
YML-C-195-53-4 x 6-3535-750-SA-36	60	750×2	6900	5000	≥70	115	
YML-C-195-53-4 x 6-3535-750-SA-36	65	810×2	7150	5000	≥70	110	
YML-C-195-53-4 x 6-3535-750-SA-36	70	875×2	7350	5000	≥70	105	
YML-C-195-53-4 x 6-3535-750-SA-36	75	935×2	7650	5000	≥70	102	
YML-C-195-53-4 x 6-3535-750-SA-36	80	1000×2	8000	5000	≥70	100	

Distribution Curve Flux

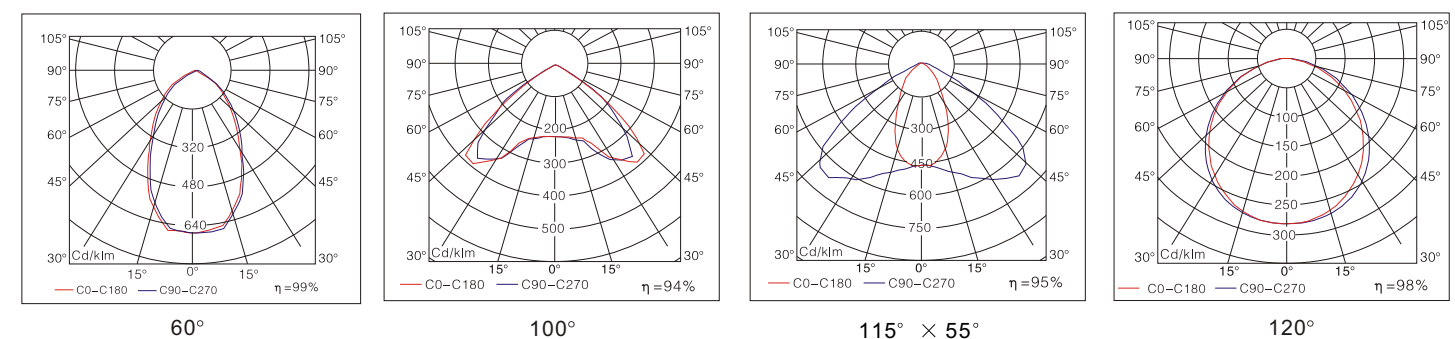
1. Street Lighting Series



2. Architectural Lighting Series



3. Industrial Lighting Series



4. Billboard Lighting Series

