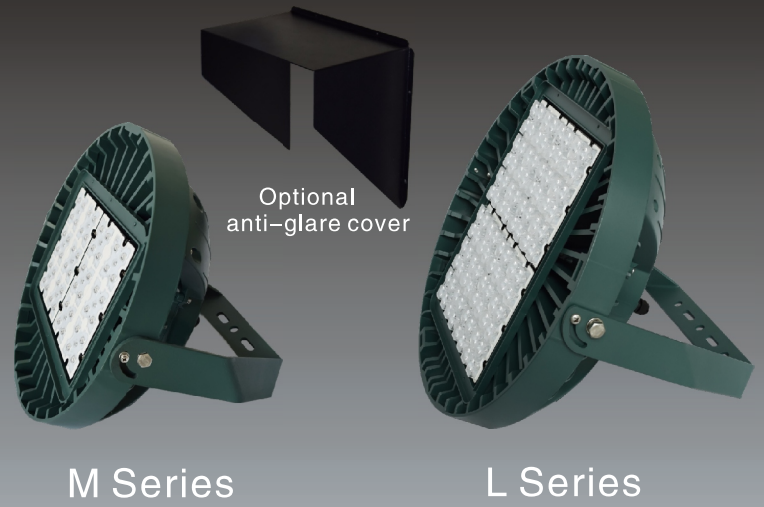


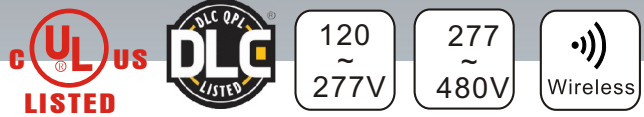
Flood Lighting

YML-1FL37 Series



M Series

L Series

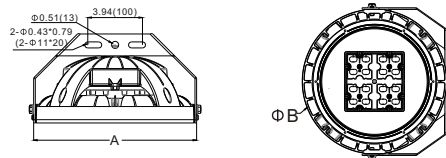


Applications

Gymnasiums, Billboards, Buildings, Parks, Pools, Parking Lots, Plazas, etc.

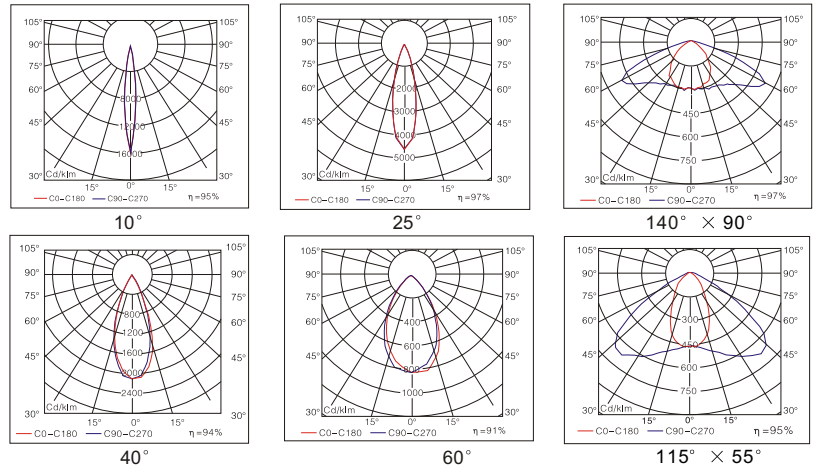
- Efficiency of chips: 150-165 lm/w, 180-195lm/w
- LENS: Optical grade PC, anti-UV oxidation.
- Beam Angle: 10° , 25° , 40° , 60° , 100° , 140° × 90° , 115° × 55°
- Housing: die casting aluminum housing with excellent heat dissipation, surface treated with powder coated finish for corrosion and static resistance.
- Input voltage: 120-277 VAC, 277~480VAC, 50/60 HZ
- LED module can be dismantled separately for maintenance.
- LED driver: constant current, efficiency is up to 92%, PF ≥ 0.95.
- IP class: IP65

Dimension [Inch(mm)]



Wattage	A	B	C	D
40-80W	11.7(298)	11.5(292)	5.3(135)	6.4(163)
100-200W	15.3(388)	15.0(380)	6.5(164)	8.5(215)
200-500W	20.1(510)	19.7(500)	7.56(192)	10.6(268)

Distribution Curve Flux



Example: YML-1FL37S-40-750-G-010-1H

Ordering Information

Company code	Voltage	Type	Power	Ra	Colour Temp.	Colour Options	Optic	Options					
YML	1 120~277VAC	FL37S	40 (40W 4950Lumens)	7	27	S	010	1					
			40P (40W 5450Lumens)						70	2700K	B	025	0~10V dimming
			60 (60W 7500Lumens)						8	30	C	040	Timing dimming
	2 200~240VAC	FL37M	60P (60W 8250Lumens)	80	3000K	Black	25	H					
			80 (80W 9250Lumens)						9	40	G	060	anti-glare cover
			80P (80W 10150Lumens)						90	4000K	C	100	Wireless
	3 100~120VAC	FL37L	100 (100W 11700Lumens)	90	5000K	Green	60	140-090					
			100P (100W 12850Lumens)						140 × 90				
			120 (120W 15000Lumens)						115-055				
	4 277~480VAC	FL37L	120P (120W 16500Lumens)	90	5700K	Green	100	115 × 55					
			150 (150W 18000Lumens)						100				
			150P (150W 19800Lumens)						100				
	5 347~480VAC	FL37L	200 (200W 22000Lumens)	90	6500K	Green	100	115 × 55					
			200P (200W 24200Lumens)						140 × 90				
			200 (200W 23400Lumens)						115-055				
FL37L	240 (240W 26150Lumens)	90	6500K	Green	100	115 × 55							
	240P (240W 28750Lumens)						140 × 90						
	300 (300W 35400Lumens)						115-055						
FL37L	300P (300W 38950Lumens)	90	6500K	Green	100	115 × 55							
	400 (400W 44000Lumens)						140 × 90						
	400P (400W 48400Lumens)						115-055						
FL37L	500 (500W 54000Lumens)	90	6500K	Green	100	115 × 55							
	500P (500W 54000Lumens)						140 × 90						
	500 (500W 54000Lumens)						115-055						